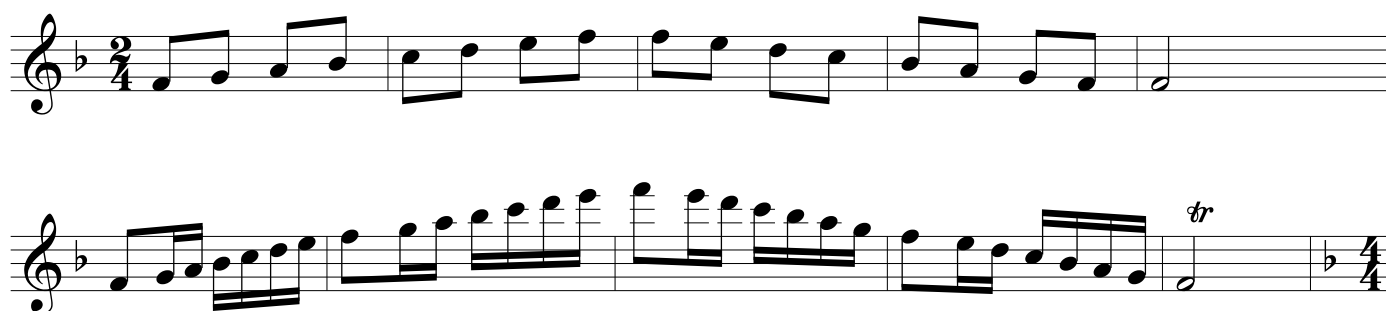


Fa Majeur, la gamme de l'automne

Myriam Darmé

Gamme de Fa Majeur



Gamme chromatique



Trilles de la danse de l'automne



Allegro ♩ = 100

Five staves of musical notation for the dance, featuring trills (tr) and dynamic markings (f and p). The notation is in 4/4 time and starts on F4. The first staff begins with a forte (f) dynamic and a trill (tr) over the first note. The second staff begins with a piano (p) dynamic. The third staff begins with a forte (f) dynamic. The fourth staff begins with a piano (p) dynamic. The fifth staff begins with a forte (f) dynamic and ends with a trill (tr) over the final note.

FaM

Les syncopes des sauts des danseurs

Two staves of music in 4/4 time, key of B-flat major. The first staff begins with a quarter rest followed by eighth notes. The second staff continues with eighth notes and ends with a double bar line and repeat sign.

La Chevauchée

Allegro molto ♩ = 138

Two staves of music in 3/8 time, key of B-flat major. The first staff starts with a forte (*f*) dynamic and ends with a piano (*p*) dynamic. The second staff starts with a forte (*f*) dynamic and ends with a piano (*p*) dynamic.



1

Fanfare des cors de chasse

Three staves of music in 3/8 time, key of B-flat major. The first staff starts with a piano (*p*) dynamic and includes markings for *p* (écho) and *pp*. The second staff starts with a mezzo-forte (*mf*) dynamic and includes markings for *p*, *mf* (écho), and *tr*. The third staff starts with a piano (*p*) dynamic and includes a *mf* marking.