

Gamme et exercices en Sol M

Myriam Darmo

Gamme de Sol Majeur



Gamme chromatique



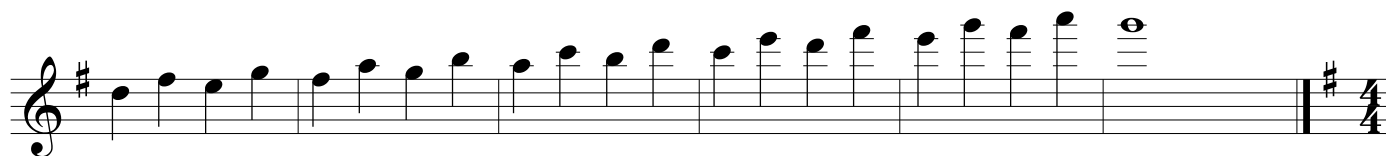
Gamme à la mode chinoise



Petit passage par les trilles

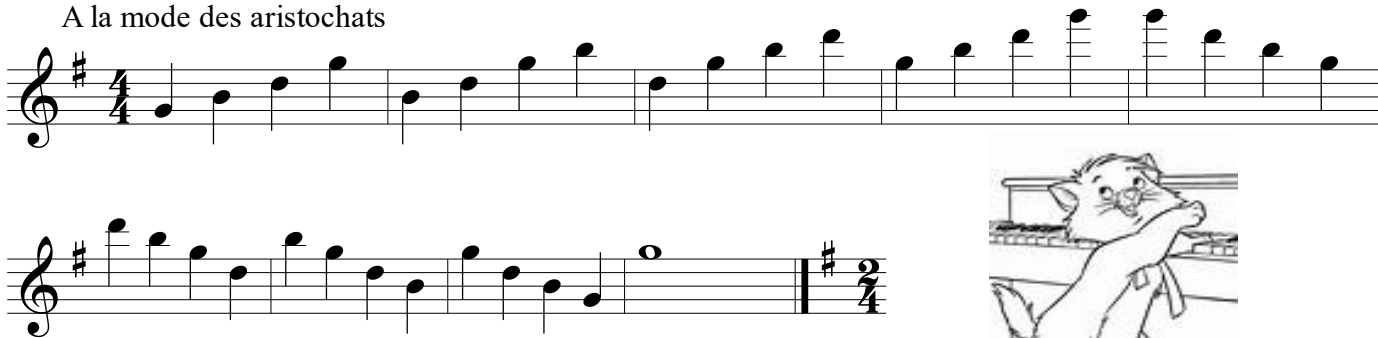


A saute-mouton

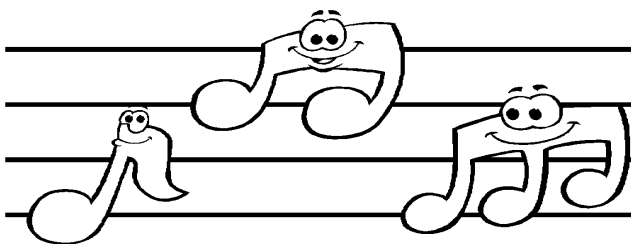
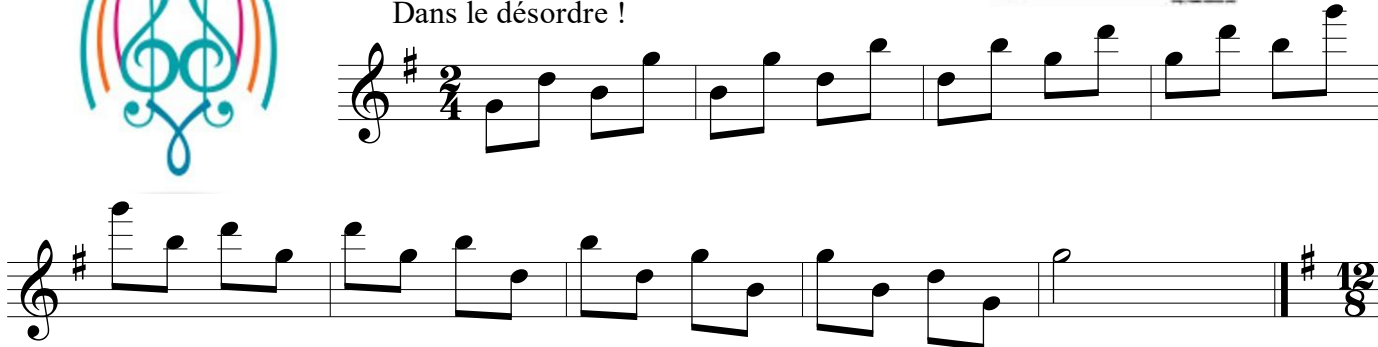


Gamme et exercices en SolM

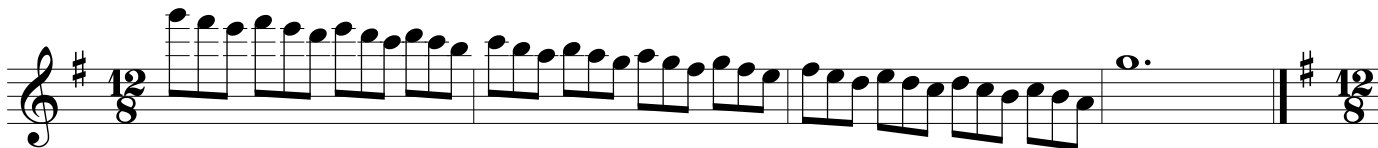
A la mode des aristochats



Dans le désordre !



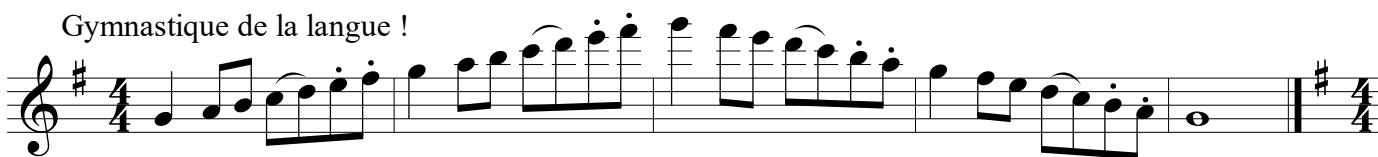
1 Gymnastique des doigts 1



Gymnastique des doigts 2



Gymnastique de la langue !



Gamme et exercices en SolM

Chantons nos gammes !

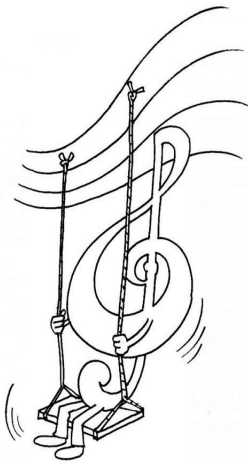
Three staves of musical notation in G major, 4/4 time. The first staff shows an ascending scale with a slur over the final four notes. The second staff shows a descending scale with a slur over the final four notes. The third staff shows a descending scale with a slur over the final four notes, ending with a double bar line and a 2/4 time signature change.

Sur 2 octaves

Two staves of musical notation in G major, 2/4 time. The first staff shows an ascending scale over two octaves. The second staff shows a descending scale over two octaves, with triplets marked '3' under the notes.

Mais où tombent les temps? n°1

One staff of musical notation in G major, 4/4 time, featuring a complex rhythmic pattern with eighth and sixteenth notes.



Mais où tombent les temps? n°2

Two staves of musical notation in G major, 2/4 time. The first staff shows a rhythmic exercise with a triplet marked 'tr'. The second staff shows a rhythmic exercise with a triplet marked 'tr'.

Un peu de jazz !

One staff of musical notation in G major, 4/4 time, featuring a jazz-influenced melody. Chord symbols are placed above the notes: G7, E7, B MIN7, E7, and A MIN7.