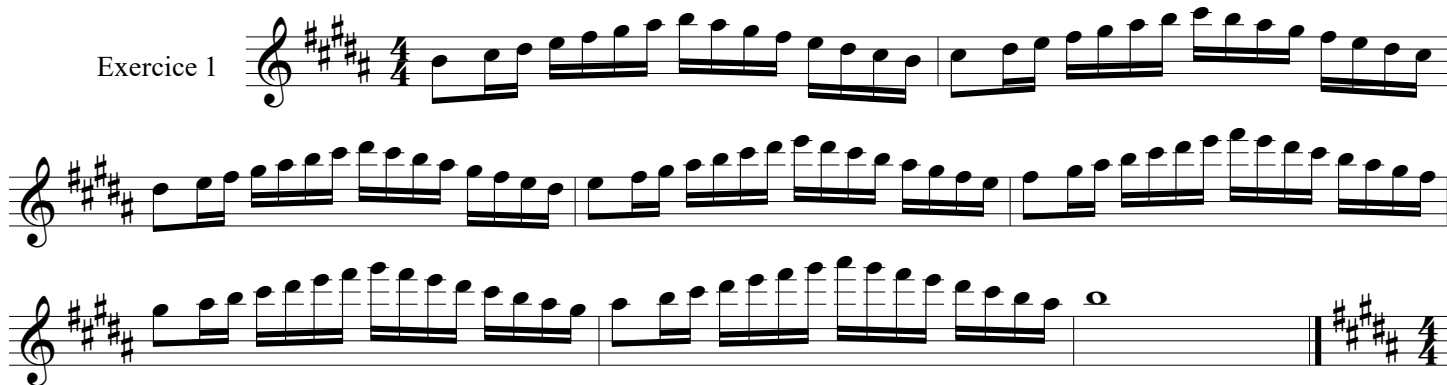


Exercices sur la gamme de Si M

Exercice 1



Exercise 1 consists of three staves of music in the key of B major (four sharps) and 4/4 time. The first staff contains a sequence of eighth-note pairs: B4-A4, G4-F4, E4-D4, C4-B3, B3-A3, G3-F3, E3-D3, C3-B2, B2-A2, G2-F2, E2-D2, C2-B1, B1-A1, G1-F1, E1-D1, C1-B0. The second staff continues with eighth-note pairs: B1-A1, G1-F1, E1-D1, C1-B0, B0-A0, G0-F0, E0-D0, C0-B-1, B-1-A-1, G-1-F-1, E-1-D-1, C-1-B-2, B-2-A-2, G-2-F-2, E-2-D-2, C-2-B-3, B-3-A-3, G-3-F-3, E-3-D-3, C-3-B-4, B-4-A-4, G-4-F-4, E-4-D-4, C-4-B-5, B-5-A-5, G-5-F-5, E-5-D-5, C-5-B-6, B-6-A-6, G-6-F-6, E-6-D-6, C-6-B-7, B-7-A-7, G-7-F-7, E-7-D-7, C-7-B-8, B-8-A-8, G-8-F-8, E-8-D-8, C-8-B-9, B-9-A-9, G-9-F-9, E-9-D-9, C-9-B-10, B-10-A-10, G-10-F-10, E-10-D-10, C-10-B-11, B-11-A-11, G-11-F-11, E-11-D-11, C-11-B-12, B-12-A-12, G-12-F-12, E-12-D-12, C-12-B-13, B-13-A-13, G-13-F-13, E-13-D-13, C-13-B-14, B-14-A-14, G-14-F-14, E-14-D-14, C-14-B-15, B-15-A-15, G-15-F-15, E-15-D-15, C-15-B-16, B-16-A-16, G-16-F-16, E-16-D-16, C-16-B-17, B-17-A-17, G-17-F-17, E-17-D-17, C-17-B-18, B-18-A-18, G-18-F-18, E-18-D-18, C-18-B-19, B-19-A-19, G-19-F-19, E-19-D-19, C-19-B-20, B-20-A-20, G-20-F-20, E-20-D-20, C-20-B-21, B-21-A-21, G-21-F-21, E-21-D-21, C-21-B-22, B-22-A-22, G-22-F-22, E-22-D-22, C-22-B-23, B-23-A-23, G-23-F-23, E-23-D-23, C-23-B-24, B-24-A-24, G-24-F-24, E-24-D-24, C-24-B-25, B-25-A-25, G-25-F-25, E-25-D-25, C-25-B-26, B-26-A-26, G-26-F-26, E-26-D-26, C-26-B-27, B-27-A-27, G-27-F-27, E-27-D-27, C-27-B-28, B-28-A-28, G-28-F-28, E-28-D-28, C-28-B-29, B-29-A-29, G-29-F-29, E-29-D-29, C-29-B-30, B-30-A-30, G-30-F-30, E-30-D-30, C-30-B-31, B-31-A-31, G-31-F-31, E-31-D-31, C-31-B-32, B-32-A-32, G-32-F-32, E-32-D-32, C-32-B-33, B-33-A-33, G-33-F-33, E-33-D-33, C-33-B-34, B-34-A-34, G-34-F-34, E-34-D-34, C-34-B-35, B-35-A-35, G-35-F-35, E-35-D-35, C-35-B-36, B-36-A-36, G-36-F-36, E-36-D-36, C-36-B-37, B-37-A-37, G-37-F-37, E-37-D-37, C-37-B-38, B-38-A-38, G-38-F-38, E-38-D-38, C-38-B-39, B-39-A-39, G-39-F-39, E-39-D-39, C-39-B-40, B-40-A-40, G-40-F-40, E-40-D-40, C-40-B-41, B-41-A-41, G-41-F-41, E-41-D-41, C-41-B-42, B-42-A-42, G-42-F-42, E-42-D-42, C-42-B-43, B-43-A-43, G-43-F-43, E-43-D-43, C-43-B-44, B-44-A-44, G-44-F-44, E-44-D-44, C-44-B-45, B-45-A-45, G-45-F-45, E-45-D-45, C-45-B-46, B-46-A-46, G-46-F-46, E-46-D-46, C-46-B-47, B-47-A-47, G-47-F-47, E-47-D-47, C-47-B-48, B-48-A-48, G-48-F-48, E-48-D-48, C-48-B-49, B-49-A-49, G-49-F-49, E-49-D-49, C-49-B-50, B-50-A-50, G-50-F-50, E-50-D-50, C-50-B-51, B-51-A-51, G-51-F-51, E-51-D-51, C-51-B-52, B-52-A-52, G-52-F-52, E-52-D-52, C-52-B-53, B-53-A-53, G-53-F-53, E-53-D-53, C-53-B-54, B-54-A-54, G-54-F-54, E-54-D-54, C-54-B-55, B-55-A-55, G-55-F-55, E-55-D-55, C-55-B-56, B-56-A-56, G-56-F-56, E-56-D-56, C-56-B-57, B-57-A-57, G-57-F-57, E-57-D-57, C-57-B-58, B-58-A-58, G-58-F-58, E-58-D-58, C-58-B-59, B-59-A-59, G-59-F-59, E-59-D-59, C-59-B-60, B-60-A-60, G-60-F-60, E-60-D-60, C-60-B-61, B-61-A-61, G-61-F-61, E-61-D-61, C-61-B-62, B-62-A-62, G-62-F-62, E-62-D-62, C-62-B-63, B-63-A-63, G-63-F-63, E-63-D-63, C-63-B-64, B-64-A-64, G-64-F-64, E-64-D-64, C-64-B-65, B-65-A-65, G-65-F-65, E-65-D-65, C-65-B-66, B-66-A-66, G-66-F-66, E-66-D-66, C-66-B-67, B-67-A-67, G-67-F-67, E-67-D-67, C-67-B-68, B-68-A-68, G-68-F-68, E-68-D-68, C-68-B-69, B-69-A-69, G-69-F-69, E-69-D-69, C-69-B-70, B-70-A-70, G-70-F-70, E-70-D-70, C-70-B-71, B-71-A-71, G-71-F-71, E-71-D-71, C-71-B-72, B-72-A-72, G-72-F-72, E-72-D-72, C-72-B-73, B-73-A-73, G-73-F-73, E-73-D-73, C-73-B-74, B-74-A-74, G-74-F-74, E-74-D-74, C-74-B-75, B-75-A-75, G-75-F-75, E-75-D-75, C-75-B-76, B-76-A-76, G-76-F-76, E-76-D-76, C-76-B-77, B-77-A-77, G-77-F-77, E-77-D-77, C-77-B-78, B-78-A-78, G-78-F-78, E-78-D-78, C-78-B-79, B-79-A-79, G-79-F-79, E-79-D-79, C-79-B-80, B-80-A-80, G-80-F-80, E-80-D-80, C-80-B-81, B-81-A-81, G-81-F-81, E-81-D-81, C-81-B-82, B-82-A-82, G-82-F-82, E-82-D-82, C-82-B-83, B-83-A-83, G-83-F-83, E-83-D-83, C-83-B-84, B-84-A-84, G-84-F-84, E-84-D-84, C-84-B-85, B-85-A-85, G-85-F-85, E-85-D-85, C-85-B-86, B-86-A-86, G-86-F-86, E-86-D-86, C-86-B-87, B-87-A-87, G-87-F-87, E-87-D-87, C-87-B-88, B-88-A-88, G-88-F-88, E-88-D-88, C-88-B-89, B-89-A-89, G-89-F-89, E-89-D-89, C-89-B-90, B-90-A-90, G-90-F-90, E-90-D-90, C-90-B-91, B-91-A-91, G-91-F-91, E-91-D-91, C-91-B-92, B-92-A-92, G-92-F-92, E-92-D-92, C-92-B-93, B-93-A-93, G-93-F-93, E-93-D-93, C-93-B-94, B-94-A-94, G-94-F-94, E-94-D-94, C-94-B-95, B-95-A-95, G-95-F-95, E-95-D-95, C-95-B-96, B-96-A-96, G-96-F-96, E-96-D-96, C-96-B-97, B-97-A-97, G-97-F-97, E-97-D-97, C-97-B-98, B-98-A-98, G-98-F-98, E-98-D-98, C-98-B-99, B-99-A-99, G-99-F-99, E-99-D-99, C-99-B-100, B-100-A-100, G-100-F-100, E-100-D-100, C-100-B-101, B-101-A-101, G-101-F-101, E-101-D-101, C-101-B-102, B-102-A-102, G-102-F-102, E-102-D-102, C-102-B-103, B-103-A-103, G-103-F-103, E-103-D-103, C-103-B-104, B-104-A-104, G-104-F-104, E-104-D-104, C-104-B-105, B-105-A-105, G-105-F-105, E-105-D-105, C-105-B-106, B-106-A-106, G-106-F-106, E-106-D-106, C-106-B-107, B-107-A-107, G-107-F-107, E-107-D-107, C-107-B-108, B-108-A-108, G-108-F-108, E-108-D-108, C-108-B-109, B-109-A-109, G-109-F-109, E-109-D-109, C-109-B-110, B-110-A-110, G-110-F-110, E-110-D-110, C-110-B-111, B-111-A-111, G-111-F-111, E-111-D-111, C-111-B-112, B-112-A-112, G-112-F-112, E-112-D-112, C-112-B-113, B-113-A-113, G-113-F-113, E-113-D-113, C-113-B-114, B-114-A-114, G-114-F-114, E-114-D-114, C-114-B-115, B-115-A-115, G-115-F-115, E-115-D-115, C-115-B-116, B-116-A-116, G-116-F-116, E-116-D-116, C-116-B-117, B-117-A-117, G-117-F-117, E-117-D-117, C-117-B-118, B-118-A-118, G-118-F-118, E-118-D-118, C-118-B-119, B-119-A-119, G-119-F-119, E-119-D-119, C-119-B-120, B-120-A-120, G-120-F-120, E-120-D-120, C-120-B-121, B-121-A-121, G-121-F-121, E-121-D-121, C-121-B-122, B-122-A-122, G-122-F-122, E-122-D-122, C-122-B-123, B-123-A-123, G-123-F-123, E-123-D-123, C-123-B-124, B-124-A-124, G-124-F-124, E-124-D-124, C-124-B-125, B-125-A-125, G-125-F-125, E-125-D-125, C-125-B-126, B-126-A-126, G-126-F-126, E-126-D-126, C-126-B-127, B-127-A-127, G-127-F-127, E-127-D-127, C-127-B-128, B-128-A-128, G-128-F-128, E-128-D-128, C-128-B-129, B-129-A-129, G-129-F-129, E-129-D-129, C-129-B-130, B-130-A-130, G-130-F-130, E-130-D-130, C-130-B-131, B-131-A-131, G-131-F-131, E-131-D-131, C-131-B-132, B-132-A-132, G-132-F-132, E-132-D-132, C-132-B-133, B-133-A-133, G-133-F-133, E-133-D-133, C-133-B-134, B-134-A-134, G-134-F-134, E-134-D-134, C-134-B-135, B-135-A-135, G-135-F-135, E-135-D-135, C-135-B-136, B-136-A-136, G-136-F-136, E-136-D-136, C-136-B-137, B-137-A-137, G-137-F-137, E-137-D-137, C-137-B-138, B-138-A-138, G-138-F-138, E-138-D-138, C-138-B-139, B-139-A-139, G-139-F-139, E-139-D-139, C-139-B-140, B-140-A-140, G-140-F-140, E-140-D-140, C-140-B-141, B-141-A-141, G-141-F-141, E-141-D-141, C-141-B-142, B-142-A-142, G-142-F-142, E-142-D-142, C-142-B-143, B-143-A-143, G-143-F-143, E-143-D-143, C-143-B-144, B-144-A-144, G-144-F-144, E-144-D-144, C-144-B-145, B-145-A-145, G-145-F-145, E-145-D-145, C-145-B-146, B-146-A-146, G-146-F-146, E-146-D-146, C-146-B-147, B-147-A-147, G-147-F-147, E-147-D-147, C-147-B-148, B-148-A-148, G-148-F-148, E-148-D-148, C-148-B-149, B-149-A-149, G-149-F-149, E-149-D-149, C-149-B-150, B-150-A-150, G-150-F-150, E-150-D-150, C-150-B-151, B-151-A-151, G-151-F-151, E-151-D-151, C-151-B-152, B-152-A-152, G-152-F-152, E-152-D-152, C-152-B-153, B-153-A-153, G-153-F-153, E-153-D-153, C-153-B-154, B-154-A-154, G-154-F-154, E-154-D-154, C-154-B-155, B-155-A-155, G-155-F-155, E-155-D-155, C-155-B-156, B-156-A-156, G-156-F-156, E-156-D-156, C-156-B-157, B-157-A-157, G-157-F-157, E-157-D-157, C-157-B-158, B-158-A-158, G-158-F-158, E-158-D-158, C-158-B-159, B-159-A-159, G-159-F-159, E-159-D-159, C-159-B-160, B-160-A-160, G-160-F-160, E-160-D-160, C-160-B-161, B-161-A-161, G-161-F-161, E-161-D-161, C-161-B-162, B-162-A-162, G-162-F-162, E-162-D-162, C-162-B-163, B-163-A-163, G-163-F-163, E-163-D-163, C-163-B-164, B-164-A-164, G-164-F-164, E-164-D-164, C-164-B-165, B-165-A-165, G-165-F-165, E-165-D-165, C-165-B-166, B-166-A-166, G-166-F-166, E-166-D-166, C-166-B-167, B-167-A-167, G-167-F-167, E-167-D-167, C-167-B-168, B-168-A-168, G-168-F-168, E-168-D-168, C-168-B-169, B-169-A-169, G-169-F-169, E-169-D-169, C-169-B-170, B-170-A-170, G-170-F-170, E-170-D-170, C-170-B-171, B-171-A-171, G-171-F-171, E-171-D-171, C-171-B-172, B-172-A-172, G-172-F-172, E-172-D-172, C-172-B-173, B-173-A-173, G-173-F-173, E-173-D-173, C-173-B-174, B-174-A-174, G-174-F-174, E-174-D-174, C-174-B-175, B-175-A-175, G-175-F-175, E-175-D-175, C-175-B-176, B-176-A-176, G-176-F-176, E-176-D-176, C-176-B-177, B-177-A-177, G-177-F-177, E-177-D-177, C-177-B-178, B-178-A-178, G-178-F-178, E-178-D-178, C-178-B-179, B-179-A-179, G-179-F-179, E-179-D-179, C-179-B-180, B-180-A-180, G-180-F-180, E-180-D-180, C-180-B-181, B-181-A-181, G-181-F-181, E-181-D-181, C-181-B-182, B-182-A-182, G-182-F-182, E-182-D-182, C-182-B-183, B-183-A-183, G-183-F-183, E-183-D-183, C-183-B-184, B-184-A-184, G-184-F-184, E-184-D-184, C-184-B-185, B-185-A-185, G-185-F-185, E-185-D-185, C-185-B-186, B-186-A-186, G-186-F-186, E-186-D-186, C-186-B-187, B-187-A-187, G-187-F-187, E-187-D-187, C-187-B-188, B-188-A-188, G-188-F-188, E-188-D-188, C-188-B-189, B-189-A-189, G-189-F-189, E-189-D-189, C-189-B-190, B-190-A-190, G-190-F-190, E-190-D-190, C-190-B-191, B-191-A-191, G-191-F-191, E-191-D-191, C-191-B-192, B-192-A-192, G-192-F-192, E-192-D-192, C-192-B-193, B-193-A-193, G-193-F-193, E-193-D-193, C-193-B-194, B-194-A-194, G-194-F-194, E-194-D-194, C-194-B-195, B-195-A-195, G-195-F-195, E-195-D-195, C-195-B-196, B-196-A-196, G-196-F-196, E-196-D-196, C-196-B-197, B-197-A-197, G-197-F-197, E-197-D-197, C-197-B-198, B-198-A-198, G-198-F-198, E-198-D-198, C-198-B-199, B-199-A-199, G-199-F-199, E-199-D-199, C-199-B-200, B-200-A-200, G-200-F-200, E-200-D-200, C-200-B-201, B-201-A-201, G-201-F-201, E-201-D-201, C-201-B-202, B-202-A-202, G-202-F-202, E-202-D-202, C-202-B-203, B-203-A-203, G-203-F-203, E-203-D-203, C-203-B-204, B-204-A-204, G-204-F-204, E-204-D-204, C-204-B-205, B-205-A-205, G-205-F-205, E-205-D-205, C-205-B-206, B-206-A-206, G-206-F-206, E-206-D-206, C-206-B-207, B-207-A-207, G-207-F-207, E-207-D-207, C-207-B-208, B-208-A-208, G-208-F-208, E-208-D-208, C-208-B-209, B-209-A-209, G-209-F-209, E-209-D-209, C-209-B-210, B-210-A-210, G-210-F-210, E-210-D-210, C-210-B-211, B-211-A-211, G-211-F-211, E-211-D-211, C-211-B-212, B-212-A-212, G-212-F-212, E-212-D-212, C-212-B-213, B-213-A-213, G-213-F-213, E-213-D-213, C-213-B-214, B-214-A-214, G-214-F-214, E-214-D-214, C-214-B-215, B-215-A-215, G-215-F-215, E-215-D-215, C-215-B-216, B-216-A-216, G-216-F-216, E-216-D-216, C-216-B-217, B-217-A-217, G-217-F-217, E-217-D-217, C-217-B-218, B-218-A-218, G-218-F-218, E-218-D-218, C-218-B-219, B-219-A-219, G-219-F-219, E-219-D-219, C-219-B-220, B-220-A-220, G-220-F-220, E-220-D-220, C-220-B-221, B-221-A-221, G-221-F-221, E-221-D-221, C-221-B-222, B-222-A-222, G-222-F-222, E-222-D-222, C-222-B-223, B-223-A-223, G-223-F-223, E-223-D-223, C-223-B-224, B-224-A-224, G-224-F-224, E-224-D-224, C-224-B-225, B-225-A-225, G-225-F-225, E-225-D-225, C-225-B-226, B-226-A-226, G-226-F-226, E-226-D-226, C-226-B-227, B-227-A-227, G-227-F-227, E-227-D-227, C-227-B-228, B-228-A-228, G-228-F-228, E-228-D-228, C-228-B-229, B-229-A-229, G-229-F-229, E-229-D-229, C-229-B-230, B-230-A-230, G-230-F-230, E-230-D-230, C-230-B-231, B-231-A-231, G-231-F-231, E-231-D-231, C-231-B-232, B-232-A-232, G-232-F-232, E-232-D-232, C-232-B-233, B-233-A-233, G-233-F-233, E-233-D-233, C-233-B-234, B-234-A-234, G-234-F-234, E-234-D-234, C-234-B-235, B-235-A-235, G-235-F-235, E-235-D-235, C-235-B-236, B-236-A-236, G-236-F-236, E-236-D-236, C-236-B-237, B-237-A-237, G-237-F-237, E-237-D-237, C-237-B-238, B-238-A-238, G-238-F-238, E-238-D-238, C-238-B-239, B-239-A-239, G-239-F-239, E-239-D-239, C-239-B-240, B-240-A-240, G-240-F-240, E-240-D-240, C-240-B-241, B-241-A-241, G-241-F-241, E-241-D-241, C-241-B-242, B-242-A-242, G-242-F-242, E-242-D-242, C-242-B-243, B-243-A-243, G-243-F-243, E-243-D-243, C-243-B-244, B-244-A-244, G-244-F-244, E-244-D-244, C-244-B-245, B-245-A-245, G-245-F-245, E-245-D-245, C-245-B-246, B-246-A-246, G-246-F-246, E-246-D-246, C-246-B-247, B-247-A-247, G-247-F-247, E-247-D-247, C-247-B-248, B-248-A-248, G-248-F-248, E-248-D-248, C-248-B-249, B-249-A-249, G-249-F-249, E-249-D-249, C-249-B-250, B-250-A-250, G-250-F-250, E-250-D-250, C-250-B-251, B-251-A-251, G-251-F-251, E-251-D-251, C-251-B-252, B-252-A-252, G-252-F-252, E-252-D-252, C-252-B-253, B-253-A-253, G-253-F-253, E-253-D-253, C-253-B-254, B-254-A-254, G-254-F-254, E-254-D-254, C-254-B-255, B-255-A-255, G-255-F-255, E-255-D-255, C-255-B-256, B-256-A-256, G-256-F-256, E-256-D-256, C-256-B-257, B-257-A-257, G-257-F-257, E-257-D-257, C-257-B-258, B-258-A-258, G-258-F-258, E-258-D-258, C-258-B-259, B-259-A-259, G-259-F-259, E-259-D-259, C-259-B-260, B-260-A-260, G-260-F-260, E-260-D-260, C-260-B-261, B-261-A-261, G-261-F-261, E-261-D-261, C-261-B-262, B-262-A-262, G-262-F-262, E-262-D-262, C-262-B-263, B-263-A-263, G-263-F-263, E-263-D-263, C-263-B-264, B-264-A-264, G-264-F-264, E-264-D-264, C-264-B-265, B-265-A-265, G-265-F-265, E-265-D-265, C-265-B-266, B-266-A-266, G-266-F-266, E-266-D-266, C-266-B-267, B-267-A-267, G-267-F-267, E-267-D-267, C-267-B-268, B-268-A-268, G-268-F-268, E-268-D-268, C-268-B-269, B-269-A-269, G-269-F-269, E-269-D-269, C-269-B-270, B-270-A-270, G-270-F-270, E-270-D-270, C-270-B-271, B-271-A-271, G-271-F-271, E-271-D-271, C-271-B-272, B-272-A-272, G-272-F-272, E-272-D-272, C-272-B-273, B-273-A-273, G-273-F-273, E-273-D-273, C-273-B-274, B-274-A-274, G-274-F-274, E-274-D-274, C-274-B-275, B-275-A-275, G-275-F-275, E-275-D-275, C-275-B-276, B-276-A-276, G-276-F-276, E-276-D-276, C-276-B-277, B-277-A-277, G-277-F-277, E-277-D-277, C-277-B-278, B-278-A-278, G-278-F-278, E-278-D-278, C-278-B-279, B-279-A-279, G-279-F-279, E-279-D-279, C-279-B-280, B-280-A-280, G-280-F-280, E-280-D-280, C-280-B-281, B-281-A-281, G-281-F-281, E-281-D-281, C-281-B-282, B-282-A-282, G-282-F-282, E-282-D-282, C-282-B-283, B-283-A-283, G-283-F-283, E-283-D-283, C-283-B-284, B-284-A-284, G-284-F-284, E-284-D-284, C-284-B-285, B-285-A-285, G-285-F-285, E-285-D-285, C-285-B-286, B-286-A-286, G-286-F-286, E-286-D-286, C-286-B-287, B-287-A-287, G-287-F-287, E-287-D-287, C-287-B-288, B-288-A-288, G-288-F-288, E-288-D-288, C-288-B-289, B-289-A-289, G-289-F-289, E-289-D-289, C-289-B-290, B-290-A-290, G-290-F-290, E-290-D-290, C-290-B-291, B-291-A-291, G-291-F-291, E-291-D-291, C-291-B-292, B-292-A-292, G-292-F-292, E-292-D-292, C-292-B-293, B-293-A-293, G-293-F-293, E-293-D-293, C-293-B-294, B-294-A-294, G-294-F-294, E-294-D-294, C-294-B-

Exercices sur la gamme de SI M

Chromatismes

Musical notation for Chromatismes exercise in G major, 4/4 time, featuring chromatic scales.

Musical notation for Gamme par ton exercise in G major, 4/4 time, featuring scale runs with accidentals.

Gamme par ton

Musical notation for Gamme par ton exercise in G major, 3/4 time, featuring scale runs with accidentals.

Gamme pentatonique

Musical notation for Gamme pentatonique exercise in G major, 3/4 time, featuring pentatonic scale runs.

Gamme diminuée

Musical notation for Gamme diminuée exercise in G major, 2/4 time, featuring diminished scale runs.

Musical notation for Gamme diminuée exercise in G major, 4/4 time, featuring diminished scale runs.

Gamme par tierces

Musical notation for Gamme par tierces exercise in G major, 4/4 time, featuring scale runs by thirds.

Musical notation for Gamme par tierces exercise in G major, 4/4 time, featuring scale runs by thirds.

Gamme par quartes

Musical notation for Gamme par quartes exercise in G major, 4/4 time, featuring scale runs by fourths.

Gamme par quintes

Musical notation for Gamme par quintes exercise in G major, 4/4 time, featuring scale runs by fifths.

Exercices sur la gamme de SI M

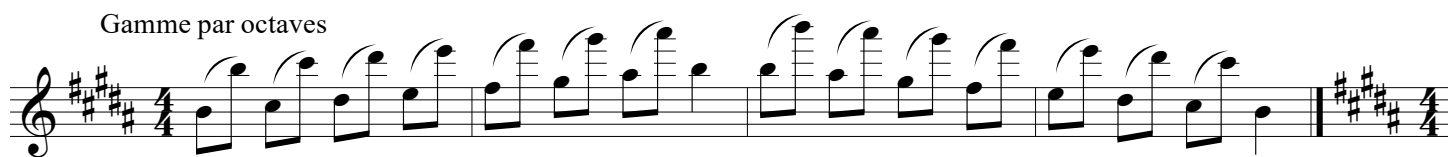
Gamme par sixtes



Gammes par septièmes



Gamme par octaves



Intervalles mélangés



Reprise à l'octave



Arpèges



Mixte

