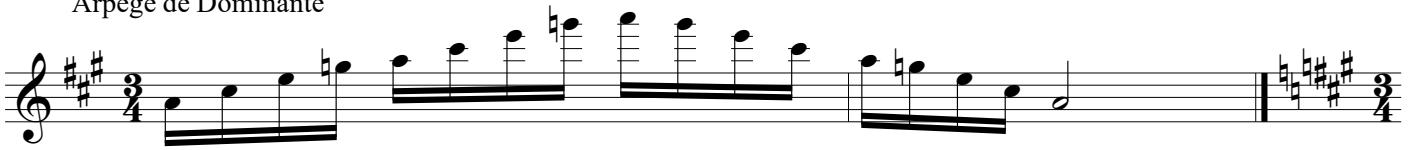


# Exercices sur la gamme de LaM / Fa#m

Myriam Darmé

## Arpège de Dominante



## Gamme mineure naturelle



## Gamme mineure harmonique



## Gamme mineure mélodique



# Exercices sur la gamme de La M

## Gamme blues exercice 1

Two staves of musical notation in 4/4 time, key of D major. The first staff contains a melodic line with notes: D4, E4, F#4, G4, A4, B4, A4, G4, F#4, E4, D4. Chords above are B MIN7, E7, A7, and F#7+5. The second staff contains a bass line with notes: D4, E4, F#4, G4, A4, B4, A4, G4, F#4, E4, D4. Chords above are B MIN7, Eb9, and A7. The piece ends with a double bar line and a repeat sign.

## Exercice 2

Three staves of musical notation in 4/4 time, key of D major. The first staff contains a melodic line with notes: D4, E4, F#4, G4, A4, B4, A4, G4, F#4, E4, D4. Chords above are A7, D7, A7, Emin7, and A7. The second staff contains a bass line with notes: D4, E4, F#4, G4, A4, B4, A4, G4, F#4, E4, D4. Chords above are D7, D7, and A7. The third staff contains a melodic line with notes: D4, E4, F#4, G4, A4, B4, A4, G4, F#4, E4, D4. Chords above are E7, D7, A7, and A7. The piece ends with a double bar line and a repeat sign.

## Exercice 3

One staff of musical notation in 4/4 time, key of D major. The melodic line consists of triplets of notes: D4, E4, F#4; G4, A4, B4; C#5, D5, E5; F#5, G5, A5; B5, A5, G5; F#5, E5, D5. Chords above are A, A7/C#, D7, D#DIM7, A/E, E, and A7. The piece ends with a double bar line and a repeat sign.

## Exercice 4

Four staves of musical notation in 4/4 time, key of D major. The first staff contains a melodic line with notes: D4, E4, F#4, G4, A4, B4, A4, G4, F#4, E4, D4. Chords above are A7. The second staff contains a bass line with notes: D4, E4, F#4, G4, A4, B4, A4, G4, F#4, E4, D4. Chords above are D7. The third staff contains a melodic line with notes: D4, E4, F#4, G4, A4, B4, A4, G4, F#4, E4, D4. Chords above are A7, Eb, and E7. The fourth staff contains a melodic line with notes: D4, E4, F#4, G4, A4, B4, A4, G4, F#4, E4, D4. Chords above are A7, E7, and A7. The piece ends with a double bar line and a repeat sign.

## Exercices sur la gamme de La M

Arpèges de jazz sur II V et I degré

Two staves of music in 4/4 time, key of A major (two sharps). The first staff contains two measures of eighth-note arpeggios. The first measure is labeled B MIN7 and the second E7. The second staff contains two measures of eighth-note arpeggios. The first measure is labeled E7 and the second A MA7. The piece concludes with a double bar line and a key signature change to A minor (three sharps).

Gamme Jazz sur III - VI - II - V - I degré

Two staves of music in 4/4 time, key of A major. The first staff contains two measures of eighth-note runs. The first measure is labeled C# MIN7 and the second F#7. The second staff contains two measures of eighth-note runs. The first measure is labeled B MIN7 and the second E7. The piece concludes with a double bar line and a key signature change to A minor.

Arpèges jazz III - VI - II - V - I degré

Exercice 1

Two staves of music in 4/4 time, key of A major. The first staff contains two measures of eighth-note arpeggios. The first measure is labeled C# MIN7 and the second F#7. The second staff contains two measures of eighth-note arpeggios. The first measure is labeled E7 and the second A MA7. The piece concludes with a double bar line and a key signature change to A minor.

Exercice 2

Two staves of music in 4/4 time, key of A major. The first staff contains two measures of eighth-note runs with triplets. The first measure is labeled C# MIN7 and the second F#7. The second staff contains two measures of eighth-note runs with triplets. The first measure is labeled B MIN7 and the second E7. The piece concludes with a double bar line and a key signature change to A minor.